



ScanFlex lever handles



ScanFlex lever handles

Lever handles	1.1
Roses for lever handles	1.9
Spindles for lever handles	1.10
Escutcheons	1.11
Cylinder rings	1.12
Thumb turns	1.18
Blind roses	1.20
Toilet indicator sets	1.22
Back plates	1.24
Square plates	1.36
Pull handles	1.41
Signs	1.48
Door stops	1.49
Coat hook	1.51
Recessed pull handle	1.51

LEVER HANDLES

Lever handle Scandinavia L-shape

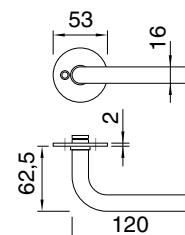
Lever handles with or without roses.

Roses with 30 or 38 mm centre.

Available in 16 and 19 mm thickness.

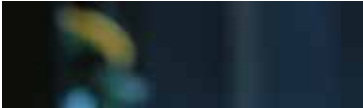
Lever handles with roses are supplied with 8 x 8 mm spindle and 2 pcs.
M4 x 75 mm through going screws.

ScanFlex is manufactured in stainless steel grade AISI 304.

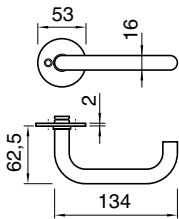


ARTICLE NO.	REF.NO.	DESCRIPTION
954001	8616-120	Lever handle 16 mm without roses
954002	8616-121	Lever handle 16 mm with roses 30 mm centre
954143	8616-138	Lever handle 16 mm with roses 38 mm centre
954007	8619-120	Lever handle 19 mm without roses
954008	8619-121	Lever handle 19 mm with roses 30 mm centre
954145	8619-138	Lever handle 19 mm with roses 38 mm centre

LEVER HANDLES



Lever handle Scandinavia U-shape



Lever handles with or without roses.

Roses with 30 or 38 mm centre.

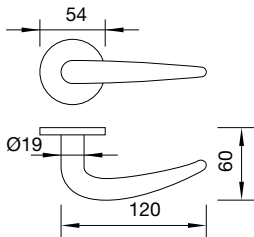
Available in 16 and 19 mm thickness.

Lever handles with roses are supplied with 8 x 8 mm spindle and 2 pcs. M4 x 75 mm through going screws.

ScanFlex is manufactured in stainless steel grade AISI 304.

ARTICLE NO.	REF.NO.	DESCRIPTION
954004	8616-220	Lever handle 16 mm without roses
954005	8616-221	Lever handle 16 mm with roses 30 mm centre
954142	8616-238	Lever handle 16 mm with roses 38 mm centre
954010	8619-220	Lever handle 19 mm without roses
954011	8619-221	Lever handle 19 mm with roses 30 mm centre
954144	8619-238	Lever handle 19 mm with roses 38 mm centre

Lever handle Scandinavia Coupé



Lever handles with or without roses.

Roses with 30 or 38 mm centre.

Available in 19 mm thickness.

Supplied with 8 x 8 mm spindle and 2 pcs. M4 x 75 mm through going screws.

ScanFlex is manufactured in stainless steel grade AISI 304.

ARTICLE NO.	REF.NO.	DESCRIPTION
954591	Coupé	Lever handle without roses
954592	Coupé	Lever handle with roses 30 mm centre

LEVER HANDLES

Lever handle Nordic L-shape

Lever handles with roses. 30 and 38 mm centre in same rose.

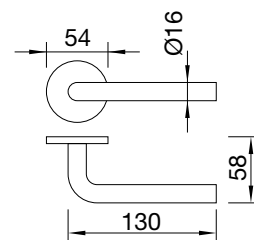
Available in 16 and 19 mm thickness.

Concealed fixing.

Supplied with 8 x 8 mm spindle and 2 pcs. M4 x 75 mm through going screws.

ScanFlex is manufactured in stainless steel grade AISI 304.

ARTICLE NO.	REF.NO.	DESCRIPTION
954502	Nordic L	Lever handle 16 mm with roses
954503	Nordic L	Lever handle 19 mm with roses



Lever handle Nordic U-shape

Lever handles with roses. 30 and 38 mm centre in same rose.

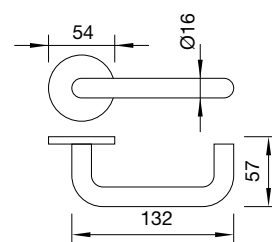
Available in 16 and 19 mm thickness.

Concealed fixing.

Supplied with 8 x 8 mm spindle and 2 pcs. M4 x 75 mm through going screws.

ScanFlex is manufactured in stainless steel grade AISI 304.

ARTICLE NO.	REF.NO.	DESCRIPTION
954500	Nordic U	Lever handle 16 mm with roses
954501	Nordic U	Lever handle 19 mm with roses



LEVER HANDLES



Lever handle Nordic Coupé

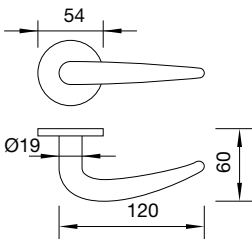
Lever handles with roses, 30 and 38 mm centre in same rose.

Available in 19 mm thickness.

Concealed fixing.

Supplied with 8 x 8 mm spindle and 2 pcs. M4 x 75 mm through going screws.

ScanFlex is manufactured in stainless steel grade AISI 304.



ARTICLE NO.	REF.NO.	DESCRIPTION
954504	Coupé	Lever handle 19 mm with roses

LEVER HANDLES

Lever handle Copenhagen

Lever handles with roses. 30 and 38 mm centre in same rose.

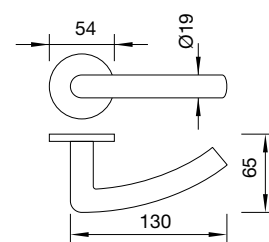
Concealed fixing.

Available in 19 mm thickness.

Supplied with 8 x 8 mm spindle and 2 pcs. M4 x 75 mm through going screws.

ScanFlex is manufactured in stainless steel grade AISI 304.

ARTICLE NO.	REF.NO.	DESCRIPTION
954520	Copenhagen	Lever handle with roses



Lever handle Oslo

Lever handles with roses. 30 and 38 mm centre in same rose.

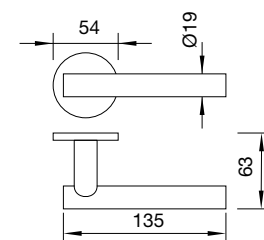
Available in 19 mm thickness.

Concealed fixing.

Supplied with 8 x 8 mm spindle and 2 pcs. M4 x 75 mm through going screws.

ScanFlex is manufactured in stainless steel grade AISI 304.

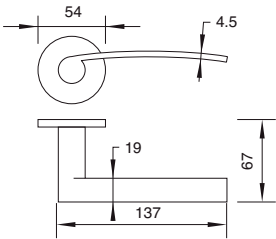
ARTICLE NO.	REF.NO.	DESCRIPTION
954521	Oslo	Lever handle with roses



LEVER HANDLES



Lever handle Denmark



Lever handles with roses. 30 and 38 mm centre in same rose.

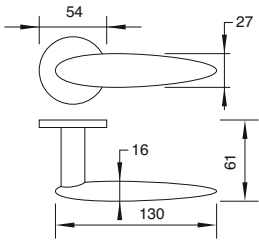
Concealed fixing.

Supplied with 8 x 8 mm spindle and 2 pcs. M4 x 75 mm through going screws.

ScanFlex is manufactured in stainless steel grade AISI 304.

ARTICLE NO.	REF.NO.	DESCRIPTION
954631	Denmark	Lever handle with roses

Lever handle Finland



Lever handles with roses. 30 and 38 mm centre in same rose.

Concealed fixing.

Supplied with 8 x 8 mm spindle and 2 pcs. M4 x 75 mm through going screws.

ScanFlex is manufactured in stainless steel grade AISI 304.

ARTICLE NO.	REF.NO.	DESCRIPTION
954632	Finland	Lever handle with roses

LEVER HANDLES

Lever handle Sweden

Lever handles with roses. 30 and 38 mm centre in same rose.

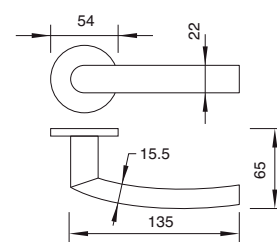
Available in 22 mm thickness.

Concealed fixing.

Supplied with 8 x 8 mm spindle and 2 pcs. M4 x 75 mm through going screws.

ScanFlex is manufactured in stainless steel grade AISI 304.

ARTICLE NO.	REF.NO.	DESCRIPTION
954633	Sweden	Lever handle with roses



Lever handle Norway

Lever handles with roses. 30 and 38 mm centre in same rose.

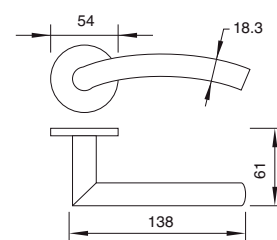
Available in 19 mm thickness.

Concealed fixing.

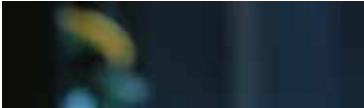
Supplied with 8 x 8 mm spindle and 2 pcs. M4 x 75 mm through going screws.

ScanFlex is manufactured in stainless steel grade AISI 304.

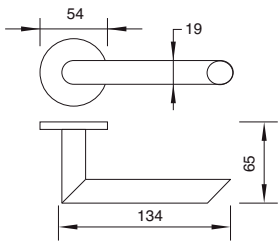
ARTICLE NO.	REF.NO.	DESCRIPTION
954634	Norway	Lever handle with roses



LEVER HANDLES



Lever handle Iceland



Lever handles with roses. 30 and 38 mm centre in same rose.

Available in 19 mm thickness.

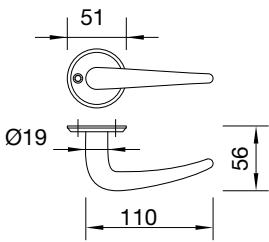
Concealed fixing.

Supplied with 8 x 8 mm spindle and 2 pcs. M4 x 75 mm through going screws.

ScanFlex is manufactured in stainless steel grade AISI 304.

ARTICLE NO.	REF.NO.	DESCRIPTION
954635	Iceland	Lever handle with roses

Lever handle 661



Lever handles with roses. 30 mm centre.

Supplied with 8 x 8 mm spindle and 2 pcs. M5 through going screws.

Brass handle with stainless steel look.

ARTICLE NO.	REF.NO.	DESCRIPTION
932084	661	Lever handle with roses, stainless look

ROSES FOR LEVER HANDLES

Roses for lever handles 8621

Roses for ScanFlex Scandinavia lever handles.

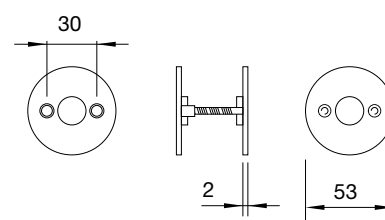
Centre distance 30 or 38 mm.

Supplied with 2 pcs. M4 x 75 mm through going screws or 4 pcs. 16 mm wood screws.

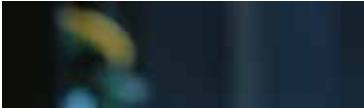
ScanFlex is manufactured in stainless steel grade AISI 304.



ARTICLE NO.	REF.NO.	DESCRIPTION
954014	8621-300	Roses with M4 x 75 mm through going screws. 30 mm centre
954017	8621-380	Roses with M4 x 75 mm through going screws. 38 mm centre
954125	8621-309	Roses with 16 mm screws. 30 mm centre
954126	8621-389	Roses with 16 mm screws. 38 mm centre



SPINDLES FOR LEVER HANDLES



Spindles



Spindles 8 x 8 mm for ScanFlex lever handles.

Door thickness 32-65 mm or 65-100 mm.

ARTICLE NO.	DESCRIPTION
954147	Spindle for lever handle, 110 mm length
954148	Spindle for lever handle, 140 mm length

ESCUTCHEONS

Key escutcheons 8625

Key escutcheon 53 x 2 mm.

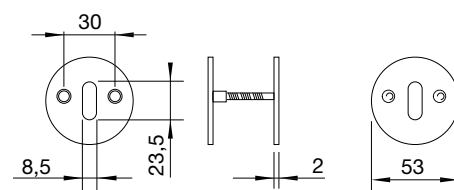
Supplied in pairs with 2 pcs. M4 x 75 mm or 4 pcs. 16 mm wood screws.

Centre distance 30 mm.

ScanFlex is manufactured in stainless steel grade AISI 304.



ARTICLE NO.	REF.NO.	DESCRIPTION
954052	8625-270	Key escutcheons with M4 x 75 mm through going screws
954129	8625-279	Key escutcheons with 16 mm wood screws



Key escutcheons

Key escutcheon 54 x 6 mm with concealed fixing.

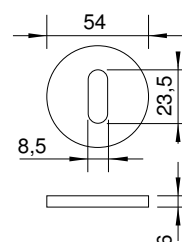
Supplied in pairs with 2 pcs. M4 x 75 mm through going screws.

Centre distance 30 mm.

ScanFlex is manufactured in stainless steel grade AISI 304.



ARTICLE NO.	REF.NO.	DESCRIPTION
954532		Key escutcheons with M4 x 75 mm through going screws



CYLINDER RINGS



External cylinder rings

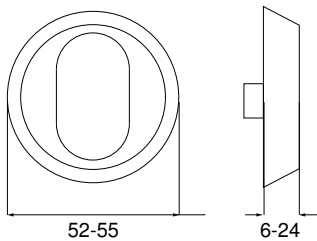


External cylinder ring for locks with Scandinavian oval cylinder.

To be used in connection with internal cylinder ring or thumb turn.

Screws not included.

Cylinder rings are manufactured in brass with stainless look finish.



ARTICLE NO.	REF.NO.	DESCRIPTION
136506	412700	ScanFlex cylinder ring 6 mm
136526	412701	ScanFlex cylinder ring 8 mm
136546	412702	ScanFlex cylinder ring 11 mm
136566	412703	ScanFlex cylinder ring 13 mm
136586	412704	ScanFlex cylinder ring 16 mm
136606	412705	ScanFlex cylinder ring 18 mm
136626	412706	ScanFlex cylinder ring 21 mm
136646	412707	ScanFlex cylinder ring 24 mm



CYLINDER RINGS

Internal cylinder rings rokoko

Internal cylinder ring for locks with Scandinavian oval cylinder.

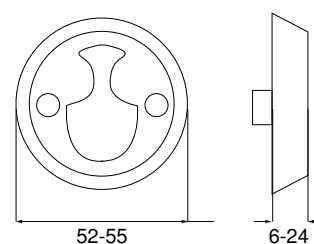
To be used in connection with external cylinder ring.

M5 mm screws 45827 to be used. Screws not included.

Cylinder rings are manufactured in brass with stainless look finish.



ARTICLE NO.	REF.NO.	DESCRIPTION
136664	463507	ScanFlex cylinder ring 6 mm
136674	463506	ScanFlex cylinder ring 8 mm
136684	463505	ScanFlex cylinder ring 11 mm
136694	463504	ScanFlex cylinder ring 13 mm
136704	463503	ScanFlex cylinder ring 16 mm
136714	463502	ScanFlex cylinder ring 18 mm
136724	463501	ScanFlex cylinder ring 21 mm
136734	463500	ScanFlex cylinder ring 24 mm



CYLINDER RINGS



Internal cylinder rings DC

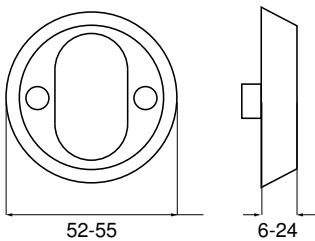


Internal cylinder ring for locks with Scandinavian oval cylinder.

To be used in connection with external cylinder ring.

M5 mm screws 45827 to be used. Screws not included.

Cylinder rings are manufactured in brass with stainless look finish.



ARTICLE NO.	REF.NO.	DESCRIPTION
136517	407376	ScanFlex cylinder ring 6 mm
136537	407377	ScanFlex cylinder ring 8 mm
136557	407378	ScanFlex cylinder ring 11 mm
136577	407379	ScanFlex cylinder ring 13 mm
136597	407380	ScanFlex cylinder ring 16 mm
136617	407381	ScanFlex cylinder ring 18 mm
136637	407382	ScanFlex cylinder ring 21 mm
136657	407383	ScanFlex cylinder ring 24 mm



CYLINDER RINGS

Cylinder accessory set 18256SF

Accessories for locks with Scandinavian oval cylinder.

Supplied with external cylinder ring, internal cylinder ring and through going screws.

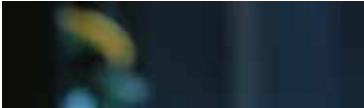
Cylinder rings are manufactured in brass with stainless look finish.



ARTICLE NO.	REF.NO.	DESCRIPTION
933315	18256SF	Accessory with 21 mm cylinder ring. For door thickness 34-37 mm
933316	18256SF	Accessory with 21 mm cylinder ring. For door thickness 38-39 mm
933317	18256SF	Accessory with 18 mm cylinder ring. For door thickness 40-45 mm
933318	18256SF	Accessory with 16 mm cylinder ring. For door thickness 46-47 mm
933319	18256SF	Accessory with 16 mm cylinder ring. For door thickness 48-49 mm
933320	18256SF	Accessory with 13 mm cylinder ring. For door thickness 50-55 mm
933321	18256SF	Accessory with 11 mm cylinder ring. For door thickness 56-59 mm
933322	18256SF	Accessory with 8 mm cylinder ring. For door thickness 60-65 mm
933323	18256SF	Accessory with 6 mm cylinder ring. For door thickness 66-69 mm
933324	18256SF	Accessory with 13 mm cylinder ring. For door thickness 70-71 mm
933325	18256SF	Accessory with 11 mm cylinder ring. For door thickness 72-75 mm
933326	18256SF	Accessory with 8 mm cylinder ring. For door thickness 76-80 mm

Door thickness is based on 6-pin cylinder

CYLINDER RINGS



Cylinder accessory set 256SC



Accessories for locks with Scandinavian oval cylinder.

Supplied with external cylinder ring, internal thumb turn, through going screws and follower set.

Cylinder rings are manufactured in brass with stainless look finish and thumb turns in stainless steel.

ARTICLE NO.	REF.NO.	DESCRIPTION
954033	256SC	Accessory with 6 mm cylinder ring
954032	256SC	Accessory with 8 mm cylinder ring
954031	256SC	Accessory with 11 mm cylinder ring
954030	256SC	Accessory with 13 mm cylinder ring
954029	256SC	Accessory with 16 mm cylinder ring
954028	256SC	Accessory with 18 mm cylinder ring
954027	256SC	Accessory with 21 mm cylinder ring
954569	256SC	Accessory with 24 mm cylinder ring

Cylinder rings 8623

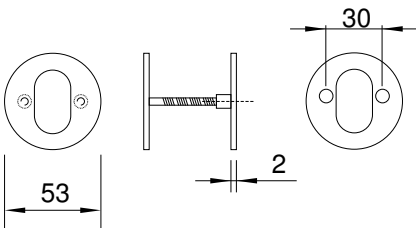


Cylinder rings for locks with Scandinavian oval cylinder.

Supplied in pairs with 2 screws M4 x 75 mm or single with screws.

Cylinder rings are manufactured in stainless steel grade AISI 304.

ARTICLE NO.	REF.NO.	DESCRIPTION
954020	8623-300	Pair of cylinder rings with M4 x 75 mm through going screws
954127	8623-309	External cylinder ring with wood screws
954021	8623-302	External cylinder ring with M4 x 75 mm through going screws



CYLINDER RINGS

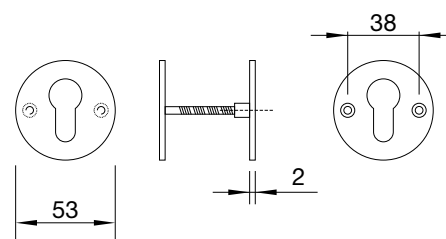
Cylinder rings 8623

Cylinder rings for locks with EURO profile cylinder.

Centre distance 38 mm.

ScanFlex is manufactured in stainless steel grade AISI 304.

ARTICLE NO.	REF.NO.	DESCRIPTION
954023	8623-380	Pair of cylinder rings with M4 x 75 mm through going screws
954128	8623-309	Single cylinder ring with wood screws



THUMB TURNS



Thumb turn 8620-230

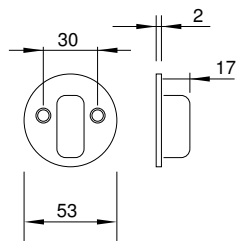


Thumb turn for ASSA Evolution and modular locks.

Supplied with 2 cylinder screws M5x28 mm and follower.

Centre distance 30 mm.

ScanFlex is manufactured in stainless steel grade AISI 304.



ARTICLE NO.	REF.NO.	DESCRIPTION
954018	8620-230	Thumb turn with 43 mm follower

THUMB TURNS

Thumb turn for disabled 8620

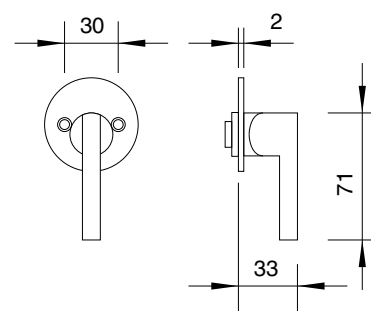
Thumb turn for disabled for ASSA Evolution and modular locks.

Supplied with 2 cylinder screws M5x28 mm and follower.

Centre distance 30 mm.

ScanFlex is manufactured in stainless steel grade AISI 304.

ARTICLE NO.	REF.NO.	DESCRIPTION
954118	8620-250	Thumb turn for disabled



BLIND ROSES



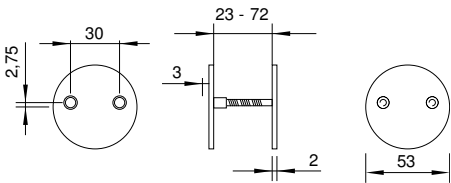
Blind rose 8624



Blind roses for ASSA Evolution and modular locks.

Centre distance 30 mm.

ScanFlex is manufactured in stainless steel grade AISI 304.



ARTICLE NO.	REF.NO.	DESCRIPTION
954041	8624-300	Blind roses in pairs with M4 x 75 mm through going screws
954042	8624-302	External blind rose with M4 x 75 mm through going screws
954043	8624-301	Internal blind rose without screws

BLIND ROSES

Blind rose 8627

Blind roses for ASSA Evolution and modular locks.

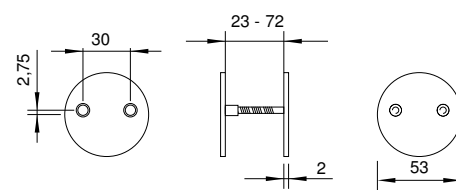
Used where cylinder or turn is not required.

Centre distance 30 mm.

ScanFlex is manufactured in stainless steel grade AISI 304.



ARTICLE NO.	REF.NO.	DESCRIPTION
954044	8624-300	Blind roses in pairs with M4 x 75 mm through going screws
954045	8624-302	External blind rose with M4 x 75 mm through going screws
954046	8624-301	Internal blind rose without screws



Blind roses

Blind roses for ASSA Evolution and modular locks.

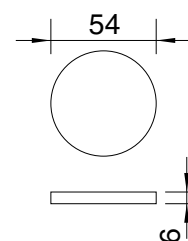
Centre distance 30 mm and 38 mm.

Concealed fixing.

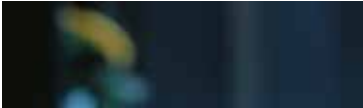
ScanFlex is manufactured in stainless steel grade AISI 304.



ARTICLE NO.	REF.NO.	DESCRIPTION
954546		Blind roses in pairs 30 and 38 mm centre



TOILET INDICATOR SETS



Toilet indikator set 8628-300



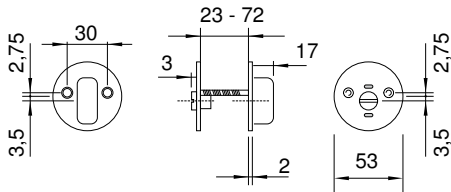
Toilet indicator set for ASSA Evolution and modular locks.

Centre distance 30 mm. Door thickness 40-50 mm.

Supplied with 2 pcs. M4 x 75 mm through going screws.

Red/white indicator showing occupied/free.

ScanFlex is manufactured in stainless steel grade AISI 304.



ARTICLE NO.	REF.NO.	DESCRIPTION
954047	8628-300	Toilet indicator set

Toilet indikator set 8628-270



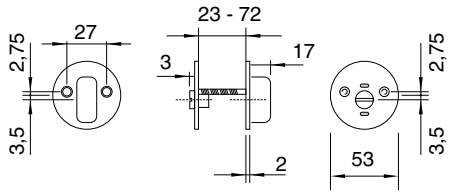
Toilet indicator set for Boda 2014 locks.

Centre distance 27 mm. Door thickness 40-50 mm.

Supplied with 2 pcs. M4 x 75 mm through going screws.

Red/white indicator showing occupied/free.

ScanFlex is manufactured in stainless steel grade AISI 304.



ARTICLE NO.	REF.NO.	DESCRIPTION
954119	8628-270	Toilet indicator set

TOILET INDICATOR SETS

Toilet indicator set 8628-270

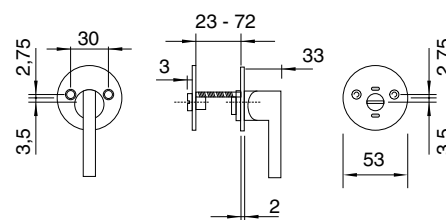
Toilet indicator set for ASSA Evolution and modular locks.

Centre distance 30 mm or 27mm. Door thickness 40-50 mm.

Supplied with 2 pcs. M4 x 75 mm through going screws. and follower.

Red/white indicator showing occupied/free.

ScanFlex is manufactured in stainless steel grade AISI 304.



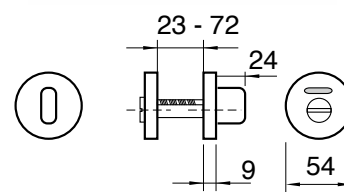
ARTICLE NO.	REF.NO.	DESCRIPTION
954122	8628-305	Toilet indicator set for disabled , 30 mm centre
954151	8628-275	Toilet indicator set for disabled , 27 mm centre

Toilet indicator set DIN/Euro standard

Toilet indicator set, with standard turn, for DIN/Euro locks.

Centre distance 38 mm. Spindle is 8x8 mm.

ScanFlex is manufactured in stainless steel grade AISI 304.



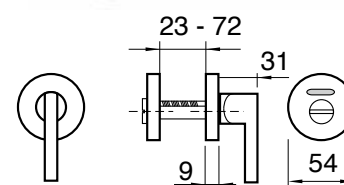
ARTICLE NO.	REF.NO.	DESCRIPTION
954 586		Toilet indicator set DIN/EURO

Toilet indicator set DIN/Euro standard

Toilet indicator set, with handicap turn, for DIN/Euro locks.

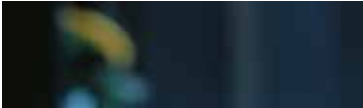
Centre distance 38 mm. Spindle is 8x8 mm.

ScanFlex is manufactured in stainless steel grade AISI 304.

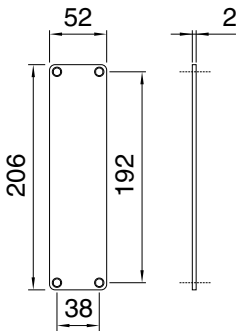


ARTICLE NO.	REF.NO.	DESCRIPTION
954 585		Toilet indicator set DIN/EURO

BACK PLATES



Blind plate 8659-520



Back plate for internal doors, where no lever handle and cylinder are required.

Supplied without screws.

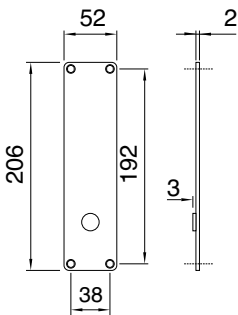
M5 screws 793610 to 793619 with nuts 954169 or wood screws can be used.

Size 52 x 206 x 2 mm.

ScanFlex is manufactured in stainless steel grade AISI 304.

ARTICLE NO.	REF.NO.	DESCRIPTION
954053	8659-520	Blind plate

Back plate 8655-521



Back plate for ASSA Evolution and modular locks for lever handle only.

Supplied without screws.

M5 screws 793610 to 793619 with nuts 954169 or wood screws can be used.

Size 52 x 206 x 2 mm . Centre distance 105 mm.

Scandinavia lever handles can be used.

ScanFlex is manufactured in stainless steel grade AISI 304.

ARTICLE NO.	REF.NO.	DESCRIPTION
954054	8655-521	Back plate

BACK PLATES

Back plate 8652-522

Back plate for ASSA Evolution and modular locks for cylinder and lever handle.

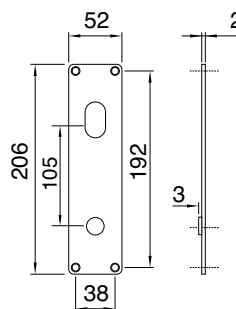
Supplied without screws.

M5 screws 793610 to 793619 with nuts 954169 or wood screws can be used.

Size 52 x 206 x 2 mm. Centre distance 105 mm.

Scandinavia lever handles can be used.

ScanFlex is manufactured in stainless steel grade AISI 304.



ARTICLE NO.	REF.NO.	DESCRIPTION
954055	8652-522	Back plate

Back plate 8654-522

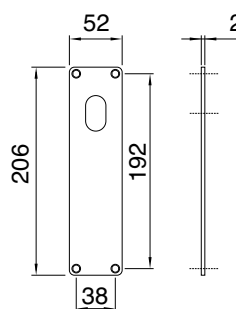
Back plate for ASSA Evolution and modular locks for cylinder only.

Supplied without screws.

M5 screws 793610 to 793619 with nuts 954169 or wood screws can be used.

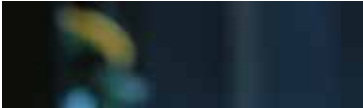
Size 52 x 206 x 2 mm. Centre distance 105 mm.

ScanFlex is manufactured in stainless steel grade AISI 304.

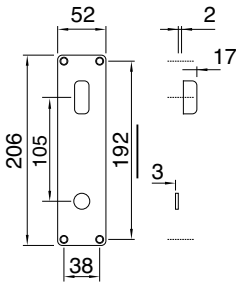


ARTICLE NO.	REF.NO.	DESCRIPTION
954056	8654-522	Back plate

BACK PLATES



Back plate 8658-522



Back plate for ASSA Evolution and modular locks for lever handle.

Back plate fitted with thumb turn. Supplied with cylinder screws and follower.

Supplied without screws.

M5 screws 793610 to 793619 with nuts 954169 or wood screws can be used.

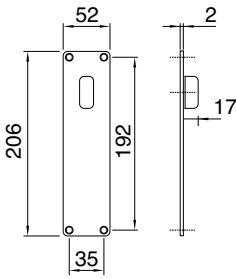
Size 52 x 206 x 2 mm. Centre distance 105 mm.

Scandinavia lever handles can be used.

ScanFlex is manufactured in stainless steel grade AISI 304.

ARTICLE NO.	REF.NO.	DESCRIPTION
954057	8658-522	Back plate

Back plate 8658-520



Back plate for ASSA Evolution and modular locks.

Back plate fitted with thumb turn. Supplied with cylinder screws and follower.

Supplied without screws.

M5 screws 793610 to 793619 with nuts 954169 or wood screws can be used.

Size 52 x 206 x 2 mm. Centre distance 105 mm.

ScanFlex is manufactured in stainless steel grade AISI 304.

ARTICLE NO.	REF.NO.	DESCRIPTION
954066	8658-520	Back plate

BACK PLATES

Back plate 8658-521

Back plate for ASSA Evolution and modular locks.

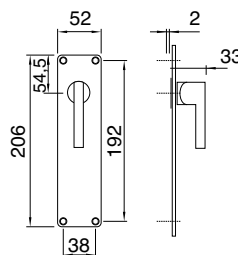
Back plate fitted with thumb turn for disabled. Supplied with cylinder screws and follower.

Supplied without screws.

M5 screws 793610 to 793619 with nuts 954169 or wood screws can be used.

Size 52 x 206 x 2 mm Centre distance 105 mm.

ScanFlex is manufactured in stainless steel grade AISI 304.



ARTICLE NO.	REF.NO.	DESCRIPTION
954159	8658-521	Back plate

Back plate 8658-523

Back plate for ASSA Evolution and modular locks for lever handle.

Back plate fitted with thumb turn for disabled. Supplied with cylinder screws and follower.

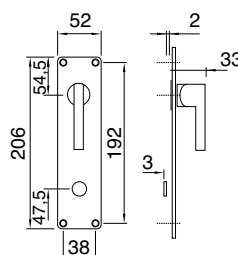
Supplied without screws.

M5 screws 793610 to 793619 with nuts 954169 or wood screws can be used.

Size 52 x 206 x 2 mm Centre distance 105 mm.

Scandinavia lever handles can be used.

ScanFlex is manufactured in stainless steel grade AISI 304.

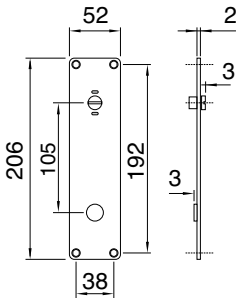


ARTICLE NO.	REF.NO.	DESCRIPTION
954158	8658-523	Back plate

BACK PLATES



Back plate 8758-522



Back plate for ASSA Evolution and modular locks for lever handle.

Back plate with red/white indicator. Supplied with follower.

Supplied without screws.

M5 screws 793610 to 793619 with nuts 954169 or wood screws can be used.

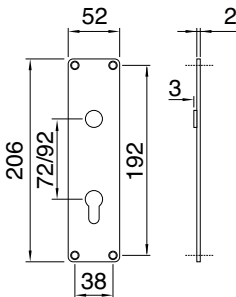
Size 52 x 206 x 2 mm Centre distance 105 mm.

Scandinavia lever handles can be used.

ScanFlex is manufactured in stainless steel grade AISI 304.

ARTICLE NO.	REF.NO.	DESCRIPTION
954058	8758-522	Back plate

Back plate 8652



Back plate for locks with lever handle and EURO profile cylinder

Supplied without screws.

M5 screws 793610 to 793619 with nuts 954169 or wood screws can be used.

Size 52 x 206 x 2 mm Centre distance 72 or 92 mm.

Scandinavia lever handles can be used.

ScanFlex is manufactured in stainless steel grade AISI 304.

ARTICLE NO.	REF.NO.	DESCRIPTION
954059	8652-721	Back plate 72 mm centre
954061	8652-921	Back plate 92 mm centre

BACK PLATES

Back plate 8655

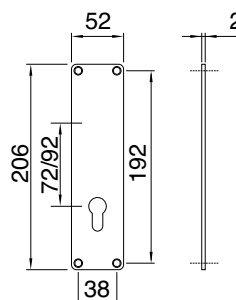
Back plate for locks with EURO profile cylinder.

Supplied without screws.

M5 screws 793610 to 793619 with nuts 954169 or wood screws can be used.

Size 52 x 206 x 2 mm. Centre distance 72 or 92 mm.

ScanFlex is manufactured in stainless steel grade AISI 304.



ARTICLE NO.	REF.NO.	DESCRIPTION
954060	8655-721	Back plate 72 mm centre
954062	8655-921	Back plate 92 mm centre

Blind plate 8659-600

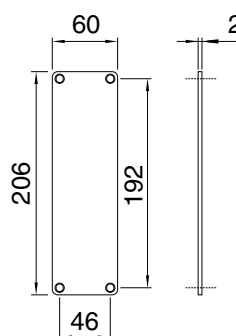
Back plate for doors, where no lever handle and cylinder are required.

Supplied without screws.

M5 screws 793610 to 793619 with nuts 954169 or wood screws can be used.

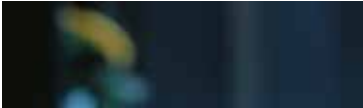
Size 60 x 206 x 2 mm.

ScanFlex is manufactured in stainless steel grade AISI 304.

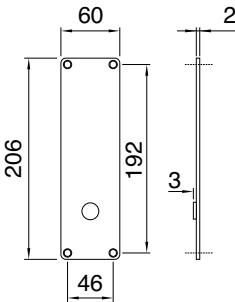


ARTICLE NO.	REF.NO.	DESCRIPTION
954063	8659-600	Blind plate

BACK PLATES



Back plate 8659-601



Back plate for ASSA Evolution and modular locks for lever handle.

Supplied without screws.

M5 screws 793610 to 793619 with nuts 954169 or wood screws can be used.

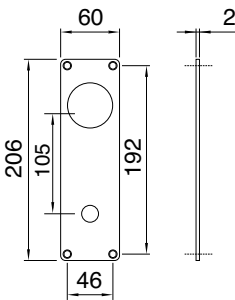
Size 60 x 206 x 2 mm. Centre distance 105 mm.

Scandinavia lever handles can be used.

ScanFlex is manufactured in stainless steel grade AISI 304.

ARTICLE NO.	REF.NO.	DESCRIPTION
954064	8659-601	Back plate

Back plate 8659-602



Back plate for ASSA Evolution and modular locks for lever handle and cylinder accessories.

Supplied without screws.

M5 screws 793610 to 793619 with nuts 954169 or wood screws can be used.

Size 60 x 206 x 2 mm. Centre distance 105 mm.

Scandinavia lever handles can be used.

ScanFlex is manufactured in stainless steel grade AISI 304.

ARTICLE NO.	REF.NO.	DESCRIPTION
954065	8659-602	Back plate

BACK PLATES

Back plate 8659-603

Back plate for ASSA Evolution and modular locks for lever handle.

Back plate fitted with thumb turn. Supplied with cylinder screws and follower.

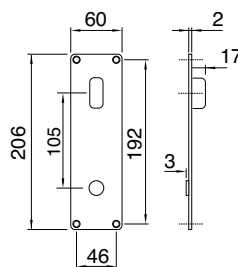
Supplied without screws.

M5 screws 793610 to 793619 with nuts 954169 or wood screws can be used.

Size 60 x 206 x 2 mm. Centre distance 105 mm.

Scandinavia lever handles can be used.

ScanFlex is manufactured in stainless steel grade AISI 304.



ARTICLE NO.	REF.NO.	DESCRIPTION
954067	8659-603	Back plate

Back plate 8659-613

Back plate for ASSA Evolution and modular locks for lever handle.

Back plate fitted with thumb turn. Supplied with cylinder screws and follower.

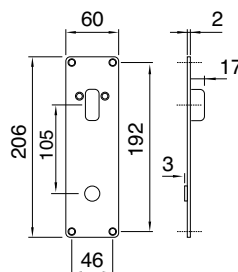
Supplied without screws.

M5 screws 793610 to 793619 with nuts 954169 or wood screws can be used.

Size 60 x 206 x 2 mm. Centre distance 105 mm.

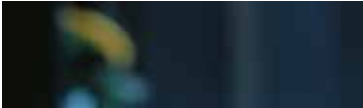
Scandinavia lever handles can be used.

ScanFlex is manufactured in stainless steel grade AISI 304.

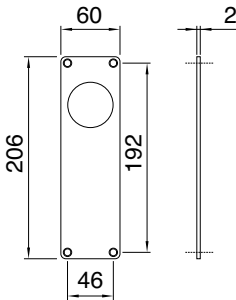


ARTICLE NO.	REF.NO.	DESCRIPTION
954068	8659-613	Back plate

BACK PLATES



Back plate 8659-604



Back plate for ASSA Evolution and modular locks for cylinder accessories.

Back plate fitted with thumb turn. Supplied with cylinder screws and follower.

Supplied without screws.

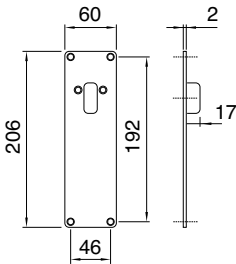
M5 screws 793610 to 793619 with nuts 954169 or wood screws can be used.

Size 60 x 206 x 2 mm. Centre distance 105 mm.

ScanFlex is manufactured in stainless steel grade AISI 304.

ARTICLE NO.	REF.NO.	DESCRIPTION
954069	8659-604	Back plate

Back plate 8659-615



Back plate for ASSA Evolution and modular locks.

Back plate fitted with thumb turn. Supplied with cylinder screws and follower.

Supplied without screws.

M5 screws 793610 to 793619 with nuts 954169 or wood screws can be used.

Size 60 x 206 x 2 mm. Centre distance 105 mm.

ScanFlex is manufactured in stainless steel grade AISI 304.

ARTICLE NO.	REF.NO.	DESCRIPTION
954071	8659-615	Back plate

BACK PLATES

Back plate 8659-606

Back plate for ASSA Evolution and modular locks for lever handle.

Back plate with red/white indicator. Supplied with follower.

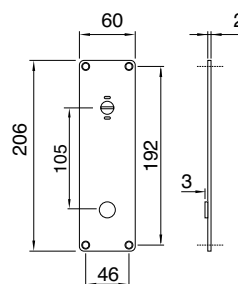
Supplied without screws.

M5 screws 793610 to 793619 with nuts 954169 or wood screws can be used.

Size 60 x 206 x 2 mm. Centre distance 105 mm.

Scandinavia lever handles can be used.

ScanFlex is manufactured in stainless steel grade AISI 304.



ARTICLE NO.	REF.NO.	DESCRIPTION
954072	8658-606	Back plate

Back plate 8659-620

Back plate for ASSA Evolution 2002 and modular lock 2000 for lever handle and cylinder accessories. Back plate fitted with thumb turn

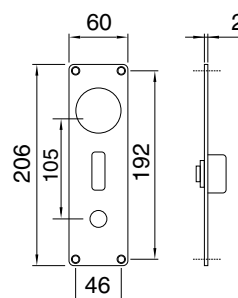
Supplied without screws.

M5 screws 793610 to 793619 with nuts 954169 or wood screws can be used.

Size 60 x 206 x 2 mm. Centre distance 105 mm.

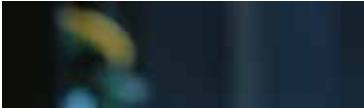
Scandinavia lever handles can be used.

ScanFlex is manufactured in stainless steel grade AISI 304.

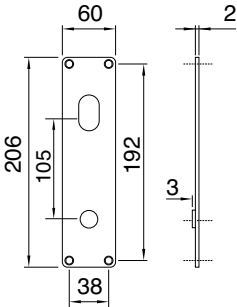


ARTICLE NO.	REF.NO.	DESCRIPTION
954114	8659-620	Back plate

BACK PLATES



Back plate 8659-622



Back plate for ASSA Evolution and modular locks for cylinder and lever handle.

Supplied without screws.

M5 screws 793610 to 793619 with nuts 954169 or wood screws can be used.

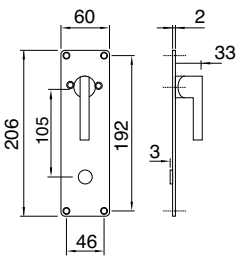
Size 60 x 206 x 2 mm. Centre distance 105 mm.

Scandinavia lever handles can be used.

ScanFlex is manufactured in stainless steel grade AISI 304.

ARTICLE NO.	REF.NO.	DESCRIPTION
954121	8659-622	Back plate

Back plate 8659-614



Back plate for ASSA Evolution and modular locks for lever handle.

Back plate fitted with thumb turn for disabled. Supplied with cylinder screws and follower.

Supplied without screws.

M5 screws 793610 to 793619 with nuts 954169 or wood screws can be used.

Size 60 x 206 x 2 mm. Centre distance 105 mm.

Scandinavia lever handles can be used.

ScanFlex is manufactured in stainless steel grade AISI 304.

ARTICLE NO.	REF.NO.	DESCRIPTION
954160	8659-614	Back plate

BACK PLATES

Back plate 8659-617

Back plate for ASSA Evolution and modular locks for lever handle.

Back plate fitted with thumb turn for disabled. Supplied with cylinder screws and follower.

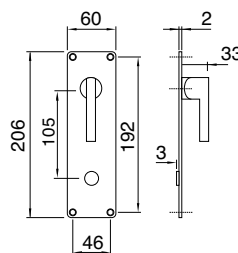
Supplied without screws.

M5 screws 793610 to 793619 with nuts 954169 or wood screws can be used.

Size 60 x 206 x 2 mm. Centre distance 105 mm.

Scandinavia lever handles can be used.

ScanFlex is manufactured in stainless steel grade AISI 304.



ARTICLE NO.	REF.NO.	DESCRIPTION
954157	8659-617	Back plate

Back plate 8659-618

Back plate for ASSA Evolution and modular locks.

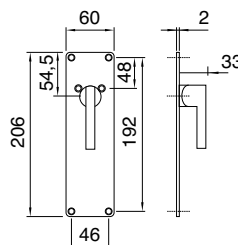
Back plate fitted with thumb turn for disabled. Supplied with cylinder screws and follower.

Supplied without screws.

M5 screws 793610 to 793619 with nuts 954169 or wood screws can be used.

Size 60 x 206 x 2 mm. Centre distance 105 mm.

ScanFlex is manufactured in stainless steel grade AISI 304.

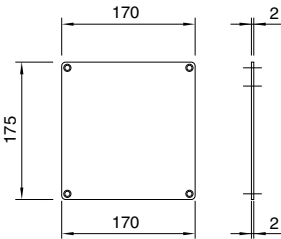


ARTICLE NO.	REF.NO.	DESCRIPTION
954156	8659-618	Back plate

SQUARE PLATES



Square plate 8670



Square plate for doors where no lever handle and cylinder are required.

Supplied without screws.

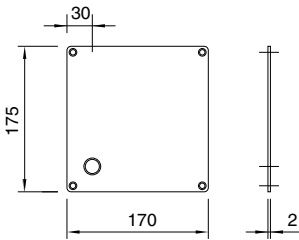
M5 screws 793610 to 793619 with nuts 954169 or wood screws can be used.

Size 170 x 175 x 2 mm.

ScanFlex is manufactured in stainless steel grade AISI 304.

ARTICLE NO.	REF.NO.	DESCRIPTION
954538	8670-600	Square plate

Square plate 8670



Square plate for ASSA Evolution and modular locks for lever handle.

Supplied without screws.

M5 screws 793610 to 793619 with nuts 954169 or wood screws can be used.

Size 170 x 175 x 2 mm.

Scandinavia lever handles can be used.

ScanFlex is manufactured in stainless steel grade AISI 304.

ARTICLE NO.	REF.NO.	DESCRIPTION
954533	8670-501	Square plate Right hand
954539	8670-601	Square plate Left hand

SQUARE PLATES

Square plate 8670

Square plate for ASSA Evolution and modular locks for cylinder.

Supplied without screws.

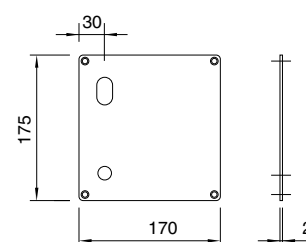
M5 screws 793610 to 793619 with nuts 954169 or wood screws can be used.

Size 170 x 175 x 2 mm. Centre distance 105 mm.

Scandinavia lever handles can be used.

ScanFlex is manufactured in stainless steel grade AISI 304.

ARTICLE NO.	REF.NO.	DESCRIPTION
954556	8670-522	Square plate Right hand
954551	8670-562	Square plate Left hand



Square plate 8670

Square plate for ASSA Evolution and modular locks for cylinder and accessories.

Supplied without screws.

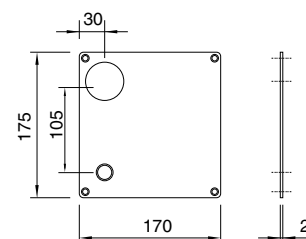
M5 screws 793610 to 793619 with nuts 954169 or wood screws can be used.

Size 170 x 175 x 2 mm. Centre distance 105 mm.

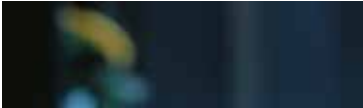
Scandinavia lever handles can be used.

ScanFlex is manufactured in stainless steel grade AISI 304.

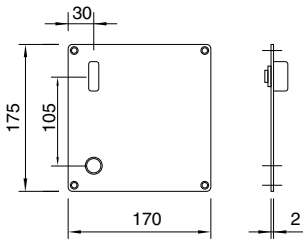
ARTICLE NO.	REF.NO.	DESCRIPTION
954534	8670-502	Square plate Right hand
954540	8670-602	Square plate Left hand



S Q U A R E P L A T E S



Square plate 8670



Square plate for ASSA Evolution and modular locks with cylinder.

Back plate fitted with thumb turn. Supplied with cylinder screws and follower.

Supplied without screws.

M5 screws 793610 to 793619 with nuts 954169 or wood screws can be used.

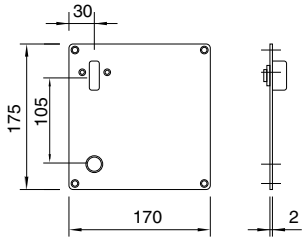
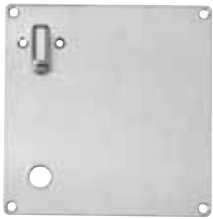
Size 170 x 175 x 2 mm. Centre distance 105 mm.

Scandinavia lever handles can be used.

ScanFlex is manufactured in stainless steel grade AISI 304.

ARTICLE NO.	REF.NO.	DESCRIPTION
954535	8670-503	Square plate Right hand
954541	8670-603	Square plate Left hand

Square plate 8670



Square plate for ASSA Evolution and modular locks with cylinder and cylinder accessories.

Back plate fitted with thumb turn. Supplied with cylinder screws and follower.

Supplied without screws.

M5 screws 793610 to 793619 with nuts 954169 or wood screws can be used.

Size 170 x 175 x 2 mm. Centre distance 105 mm

Scandinavia lever handles can be used.

ScanFlex is manufactured in stainless steel grade AISI 304.

ARTICLE NO.	REF.NO.	DESCRIPTION
954537	8670-513	Square plate 170x175x2 mm. Right hand
954543	8670-613	Square plate 170x175x2 mm. Left hand

SQUARE PLATES

Square plate 8670

Square plate for ASSA Evolution and modular locks with cylinder.

Back plate fitted with disabled thumb turn. Supplied with cylinder screws and follower.

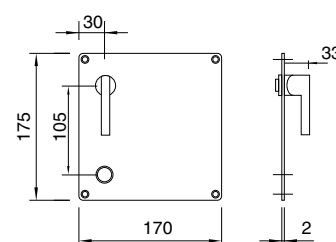
Supplied without screws.

M5 screws 793610 to 793619 with nuts 954169 or wood screws can be used.

Size 170 x 175 x 2 mm. Centre distance 105 mm.

Scandinavia lever handles can be used.

ScanFlex is manufactured in stainless steel grade AISI 304.



ARTICLE NO.	REF.NO.	DESCRIPTION
954153	8670-504	Square plate Right hand
954155	8670-604	Square plate Left hand

Square plate 8670

Square plate for ASSA Evolution and modular locks with cylinder and cylinder accessories.

Back plate fitted with disabled thumb turn. Supplied with cylinder screws and follower.

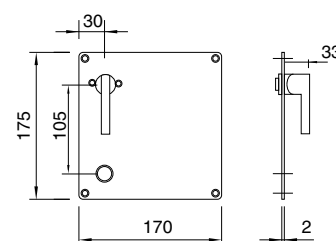
Supplied without screws.

M5 screws 793610 to 793619 with nuts 954169 or wood screws can be used.

Size 170 x 175 x 2 mm. Centre distance 105 mm.

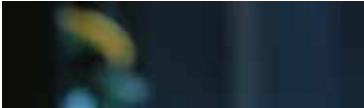
Scandinavia lever handles can be used.

ScanFlex is manufactured in stainless steel grade AISI 304.

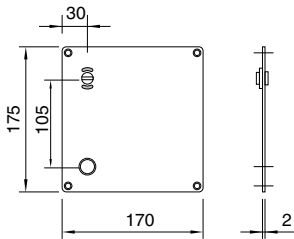


ARTICLE NO.	REF.NO.	DESCRIPTION
954154	8670-514	Square plate Right hand
954152	8670-614	Square plate Left hand

SQUARE PLATES



Square plate 8670



Square plate for ASSA Evolution and modular locks for lever handle.

Back plate with red/white indicator. Supplied with follower.

Supplied without screws.

M5 screws 793610 to 793619 with nuts 954169 or wood screws can be used.

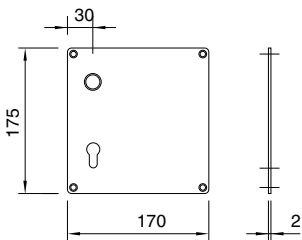
Size 170 x 175 x 2 mm. Centre distance 105 mm.

Scandinavia lever handles can be used.

ScanFlex is manufactured in stainless steel grade AISI 304.

ARTICLE NO.	REF.NO.	DESCRIPTION
954536	8670-506	Back plate Right hand
954542	8670-606	Back plate Left hand

Square plate 8670



Square plate for locks with lever handle and EURO profile cylinder.

Supplied without screws.

M5 screws 793610 to 793619 with nuts 954169 or wood screws can be used.

Size 170 x 175 x 2 mm. Centre distance 72 or 92 mm.

Scandinavia lever handles can be used.

ScanFlex is manufactured in stainless steel grade AISI 304.

ARTICLE NO.	REF.NO.	DESCRIPTION
954552	8670-721	Back plate 72 mm centre. Right hand
954553	8670-722	Back plate 72 mm centre. Left hand
954555	8670-921	Back plate 92 mm centre. Right hand
954550	8670-922	Back plate 92 mm centre. Left hand

PULL HANDLES

Pull handle straight 25 x 300

Straight pull handle to glass-, wood- and metal doors.

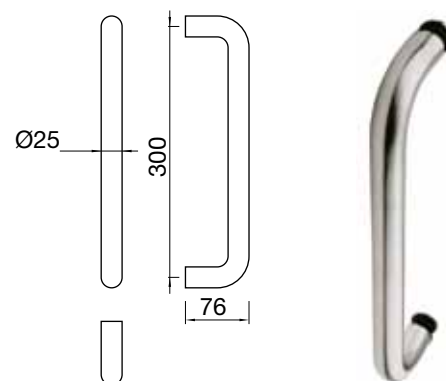
For bolt through or back-to-back fixing.

Supplied with fixing bolts and glass door accessories.

Door thickness 10-40 mm.

Size 25 mm diameter x 300 mm C/C.

ScanFlex is manufactured in stainless steel grade AISI 304.



ARTICLE NO.	REF.NO.	DESCRIPTION
954073	8251-300	Single straight pull handle. Bolt-through fixing
954074	8252-300	Pair of straight pull handle. Back-to-back fixing

Pull handle cranked 25 x 300

Cranked pull handle to glass-, wood- and metal doors.

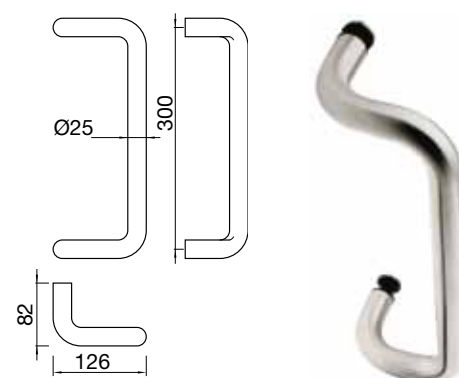
For bolt through or back-to-back fixing.

Supplied with fixing bolts and glass door accessories.

Door thickness 10-40 mm.

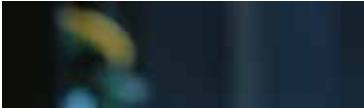
Size 25 mm diameter x 300 mm C/C.

ScanFlex is manufactured in stainless steel grade AISI 304.

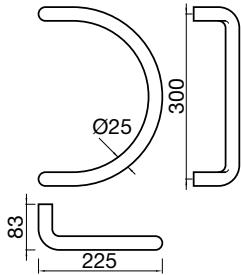


ARTICLE NO.	REF.NO.	DESCRIPTION
954075	8253-300	Single cranked pull handle. Bolt-through fixing
954076	8254-300	Pair of cranked pull handle. Back-to-back fixing

PULL HANDLES



Pull handle circular 25 x 300



Circular pull handle to glass-, wood- and metal doors.

For bolt through or back-to-back fixing.

Supplied with fixing bolts and glass door accessories.

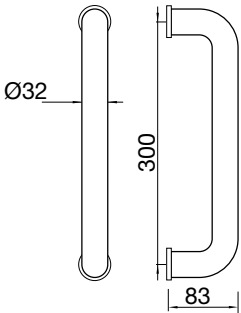
Door thickness 10-40 mm.

Size 25 mm diameter x 300 mm C/C.

ScanFlex is manufactured in stainless steel grade AISI 304

ARTICLE NO.	REF.NO.	DESCRIPTION
954078	8255-300	Single circular pull handle. Bolt-through fixing
954079	8256-300	Pair of circular pull handle. Back-to-back fixing

Pull handle straight 25 x 300



Straight pull handle to glass-, wood- and metal doors.

For bolt through or back-to-back fixing.

Supplied with fixing bolts and glass door accessories.

Door thickness 10-40 mm.

Size 32 mm diameter x 300 mm C/C.

ScanFlex is manufactured in stainless steel grade AISI 304.

ARTICLE NO.	REF.NO.	DESCRIPTION
954081	8312-300	Single straight pull handle. Bolt-through fixing
954080	8311-300	Pair of straight pull handle. Back-to-back fixing

PULL HANDLES

Pull handle cranked 32 x 300

Cranked pull handle to wood and metal doors.

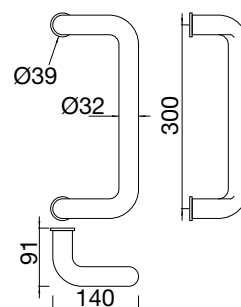
For bolt through or back-to-back fixing.

Supplied with fixing bolts and glass door accessories.

Door thickness 10-40 mm.

Size 32 mm diameter x 300 mm C/C.

ScanFlex is manufactured in stainless steel grade AISI 304.



ARTICLE NO.	REF.NO.	DESCRIPTION
954083	8314-300	Single cranked pull handle. Bolt-through fixing
954082	8313-300	Pair of cranked pull handle. Back-to-back fixing

Pull handle circular 32 x 300

Circular pull handle to glass-, wood- and metal doors.

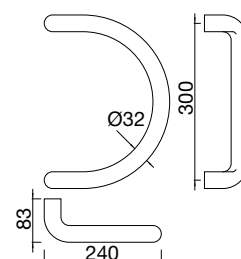
For bolt through or back-to-back fixing.

Supplied with fixing bolts and glass door accessories.

Door thickness 10-40 mm.

Size 32 mm diameter x 300 mm C/C.

ScanFlex is manufactured in stainless steel grade AISI 304.

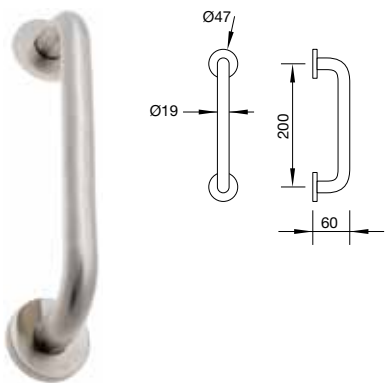


ARTICLE NO.	REF.NO.	DESCRIPTION
954084	8315-300	Single circular pull handle. Bolt-through fixing
954085	8316-300	Pair of circular pull handle. Back-to-back fixing

PULL HANDLES



Pull handle straight 19 x 200



Straight pull handle with fixed rose to wood- and metal doors.

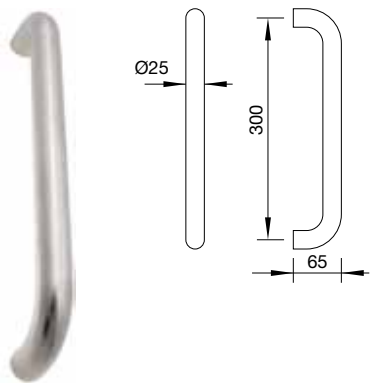
For surface fixing.

Size 19 mm diameter x 200 mm C/C.

ScanFlex is manufactured in stainless steel grade AISI 304.

ARTICLE NO.	REF.NO.	DESCRIPTION
954509		Single cranked pull handle

Pull handle straight 25 x 300



Straight pull handle to glass-, wood- and metal doors.

For bolt through or back-to-back fixing.

Supplied with fixing bolts and glass door accessories.

Door thickness 10-45 mm.

Size 25 mm diameter x 300 mm C/C.

ScanFlex is manufactured in stainless steel grade AISI 304.

ARTICLE NO.	REF.NO.	DESCRIPTION
954510		Single straight pull handle. Bolt-through fixing
954511		Pair of straight pull handle. Back-to-back fixing

PULL HANDLES

Pull handle straight 32 x 300

Straight pull handle to glass-, wood- and metal doors.

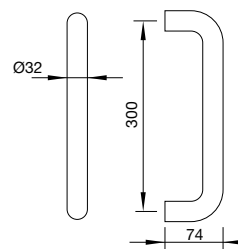
For bolt through or back-to-back fixing.

Supplied with fixing bolts and glass door accessories.

Door thickness 10-45 mm.

Size 32 mm diameter x 300 mm C/C.

ScanFlex is manufactured in stainless steel grade AISI 304.



ARTICLE NO.	REF.NO.	DESCRIPTION
954512		Single straight pull handle. Bolt-through fixing
954513		Pair of straight pull handle. Back-to-back fixing

Pull handle circular 32 x 300

Circular pull handle to glass-, wood- and metal doors.

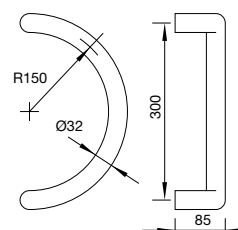
For back-to-back fixing.

Supplied with fixing bolts and glass door accessories.

Door thickness 10-45 mm.

Size 32 mm diameter x 300 mm C/C.

ScanFlex is manufactured in stainless steel grade AISI 304.

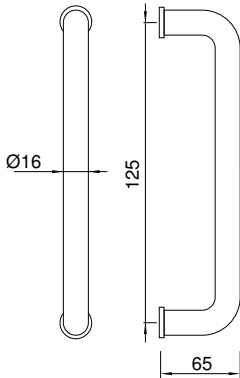


ARTICLE NO.	REF.NO.	DESCRIPTION
954514		Pair of circular pull handle. Back-to-back fixing

PULL HANDLES



Pull handle straight 16 x 125



Straight pull handle to glass-, wood- and metal doors.

For back-to-back fixing.

Supplied with fixing bolts and glass door accessories.

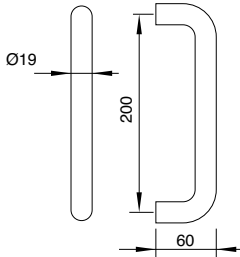
Door thickness 10-40 mm.

Size 16 mm diameter x 125 mm C/C.

ScanFlex is manufactured in stainless steel grade AISI 304.

ARTICLE NO.	REF.NO.	DESCRIPTION
954522	8313	Pair of cranked pull handle. Back-to-back fixing

Pull handle straight 19 x 200



Straight pull handle to glass-, wood- and metal doors.

For back-to-back fixing.

Supplied with fixing bolts and glass door accessories.

Door thickness 10-45 mm.

Size 19 mm diameter x 200 mm C/C.

ScanFlex is manufactured in stainless steel grade AISI 304.

ARTICLE NO.	REF.NO.	DESCRIPTION
954529		Pair of circular pull handle. Back-to-back fixing

PULL HANDLES

Pull handle straight 16 x 200

Straight pull handle to glass-, wood- and metal doors.

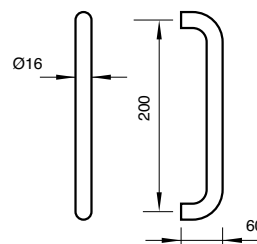
For bolt through or back-to-back fixing.

Supplied with fixing bolts and glass door accessories.

Door thickness 10-45 mm.

Size 16 mm diameter x 20 mm C/C.

ScanFlex is manufactured in stainless steel grade AISI 304.



ARTICLE NO.	REF.NO.	DESCRIPTION
954565		Single straight pull handle. Bolt-through fixing
954566		Pair of straight pull handle. Back-to-back fixing

Pull handle straight 16 x 125 on plate

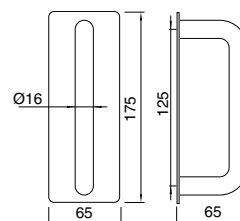
Straight pull handle to wood- and metal doors.

Fixed on a 65 x 175 mm plate.

Supplied with wood screws.

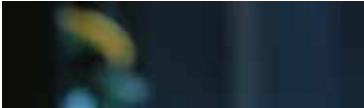
Size 19 mm diameter x 125 mm C/C.

ScanFlex is manufactured in stainless steel grade AISI 304.

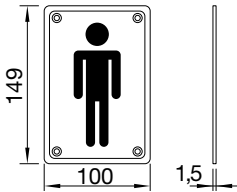


ARTICLE NO.	REF.NO.	DESCRIPTION
954568		Single straight pull handle fixed on plate

S I G N S



Male toilet sign



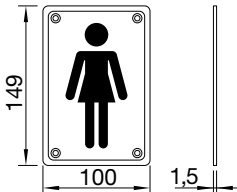
Supplied single with wood screws.

Size 100 x 149 mm.

ScanFlex is manufactured in stainless steel grade AISI 304.

ARTICLE NO.	REF.NO.	DESCRIPTION
954515		Toilet sign, Male

Female toilet sign



Supplied single with wood screws.

Size 100 x 149 mm.

ScanFlex is manufactured in stainless steel grade AISI 304.

ARTICLE NO.	REF.NO.	DESCRIPTION
954516		Toilet sign, Female

DOORSTOPS

Door stop

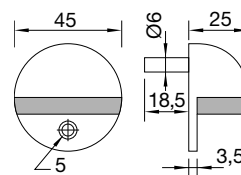
Floor door stop.

“Half-moon” model with black rubber.

Size 25 mm diameter x 25 mm high.

Supplied single without screws.

ScanFlex is manufactured in stainless steel grade AISI 304.



ARTICLE NO.	REF.NO.	DESCRIPTION
954506		Floor door stop

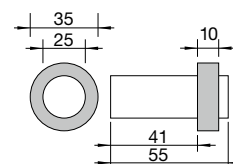
Door stop

Floor door stop with black rubber.

Size 25 mm diameter x 55 mm high.

Supplied without screws.

ScanFlex is manufactured in stainless steel grade AISI 304.



ARTICLE NO.	REF.NO.	DESCRIPTION
954507		Floor door stop

Door stop

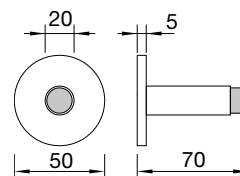
Wall door stop with black rubber.

Size 20 mm diameter x 70 mm high.

Door stop fixed on 53 mm x 5 mm rose.

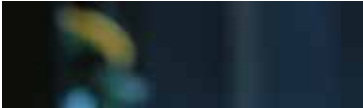
Supplied without screws.

ScanFlex is manufactured in stainless steel grade AISI 304.

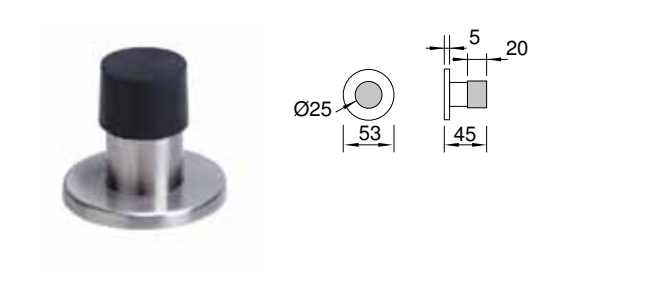


ARTICLE NO.	REF.NO.	DESCRIPTION
954508		Wall door stop

DOORSTOPS



Door stop



Floor door stop with black rubber.

Size 25 mm diameter x 45 mm high.

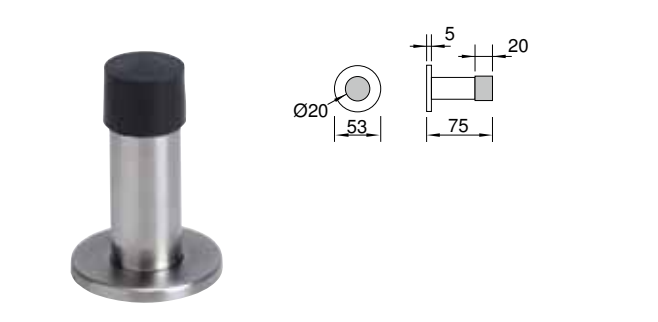
Door stop fixed on 53 mm x 5 mm rose.

Supplied single without screws.

ScanFlex is manufactured in stainless steel grade AISI 304.

ARTICLE NO.	REF.NO.	DESCRIPTION
954544		Floor door stop
954562		Loose rubber buffer to 954544/954545

Door stop



Wall door stop with black rubber.

Size 20 mm diameter x 75 mm high.

Door stop fixed on 53 mm x 5 mm rose.

Supplied without screws.

ScanFlex is manufactured in stainless steel grade AISI 304.

ARTICLE NO.	REF.NO.	DESCRIPTION
954545		Floor door stop
954562		Loose rubber buffer to 954544/954545

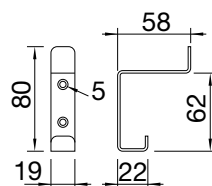
WINDOW HANDLES

Coat hook

Coat hook for wall mounting

Supplied with wood screws.

ScanFlex is manufactured in stainless steel grade AISI 304.



ARTICLE NO.	REF.NO.	DESCRIPTION
954517		Clothes hook

Recessed pull handle

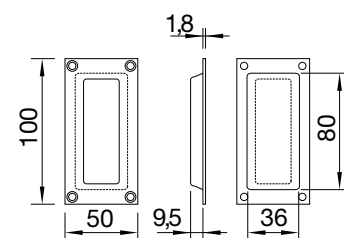
Recessed pull handle for sliding doors.

Supplied single including wood screws.

ScanFlex is manufactured in stainless steel grade AISI 304.



ARTICLE NO.	REF.NO.	DESCRIPTION
954518		Recessed pull handle



Ruko A/S
Marielundvej 20
2730 Herlev

Tel: 44 54 44 54

Fax: 44 54 44 44
e-mail: ruko@ruko.dk
www.ruko.dk

Ruko
ASSA ABLOY

ASSA ABLOY is the global leader in door opening solutions, dedicated to satisfying end-user needs for security, safety and convenience.

Ruko has been Denmark's leading supplier of locks and keys for more than 75 years. On the basis of this position, the market area and product range are continually being developed and expanded.

Today, Ruko is a total supplier to the lock market and a particularly active player on the growing security market. Ruko offers the lock and security market a wide range of products and services that can contribute to effective security in houses, institutions and commercial buildings.

Ruko is part of the ASSA ABLOY group. ASSA ABLOY is the world's leading supplier of solutions for complete door security, with a focus on fulfilling the end user's needs for security, safety and user-friendliness. The group has over 32,000 employees and an annual turnover of 3 billion EUR.

For additional information visit www.ruko.dk or contact us via telephone or e-mail.